

# MASONRY CLEANING & CONSERVATION

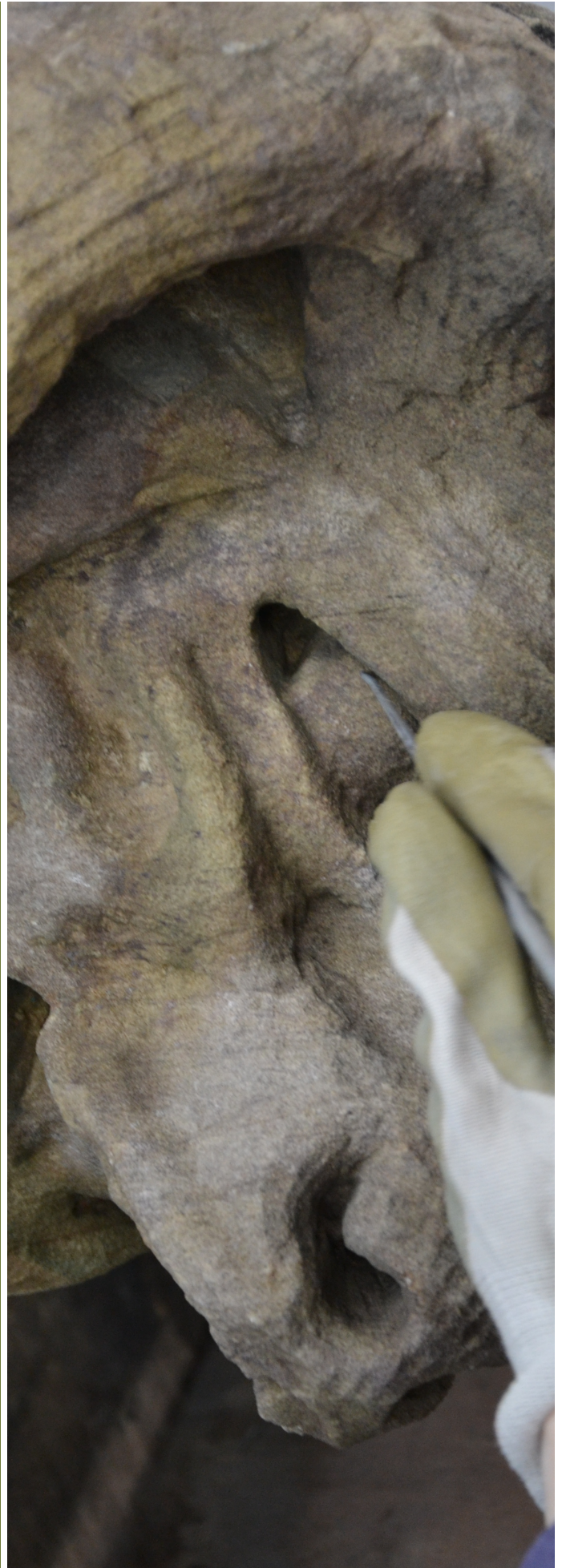


# GIVING THE PAST A FUTURE

Since 2012 RJW Gem Campbell Stonemasons Inc. has offered a cleaning service designed for the sensitive conservation & restoration of historic architectural fabric.

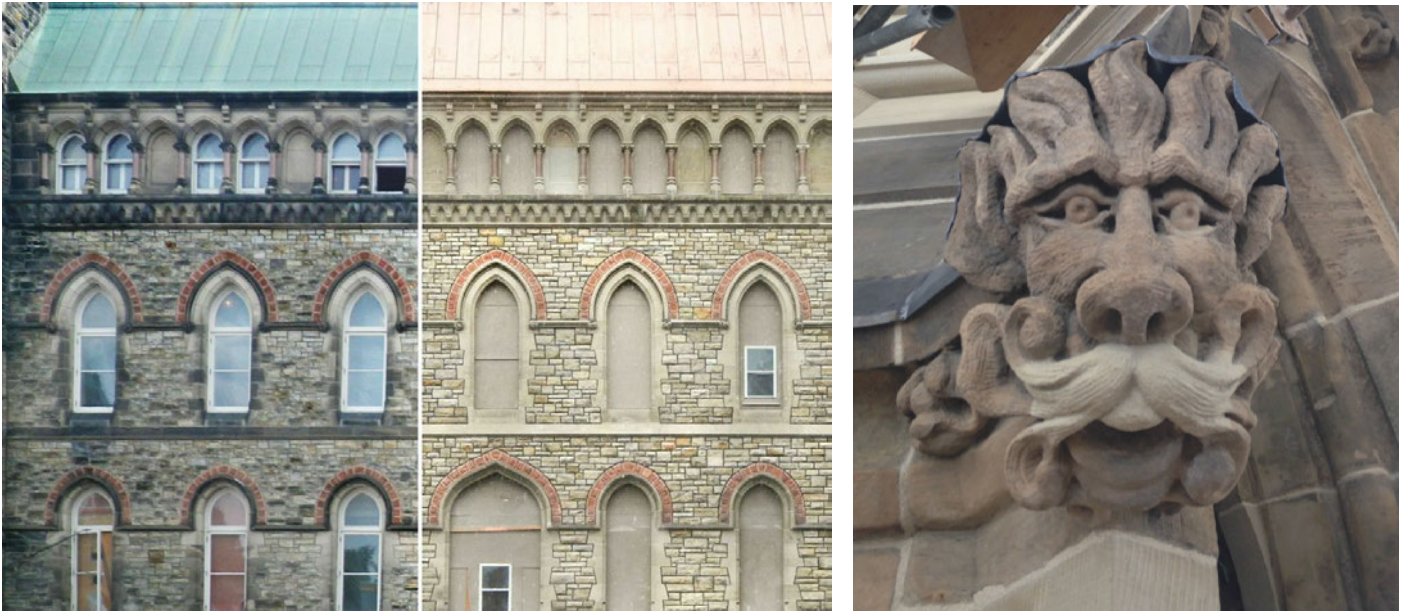
We offer this service in addition to our well-established masonry restoration business. Our team of qualified conservators can provide:

- Cleaning by laser - we are a leader in the field - to date, no other contractor is using this method on large-scale projects in North America.
- Cleaning by micro-abrasion, steam, poultice, chemical & mechanical methods.
- Repair by micro-injection & patching, mechanical reinforcement, chemical consolidation & dutchmen.
- A full documentation & conservation management service - condition reports, photographic assessments, recommendations & specifications for repair.
- Consultation in all aspects of the conservation of architectural, monumental & sculptural stonework - and associated material.





## CONSERVATION AT RJW GEM CAMPBELL



CLOCKWISE FROM TOP: WALL RESTORATION, BEFORE AND AFTER; CONSERVATION REPAIRS TO GROTESQUE; CLEANING AND CONSERVATION OF SCULPTURAL ELEMENT, BEFORE AND AFTER; DUTCHMAN REPAIR, DECORATIVE PANEL; CONSERVATION REPAIRS AND CLEANING OF GROTESQUE ELEMENT. ALL PHOTOS TAKEN ON THE WEST BLOCK, PARLIAMENT HILL, OTTAWA.

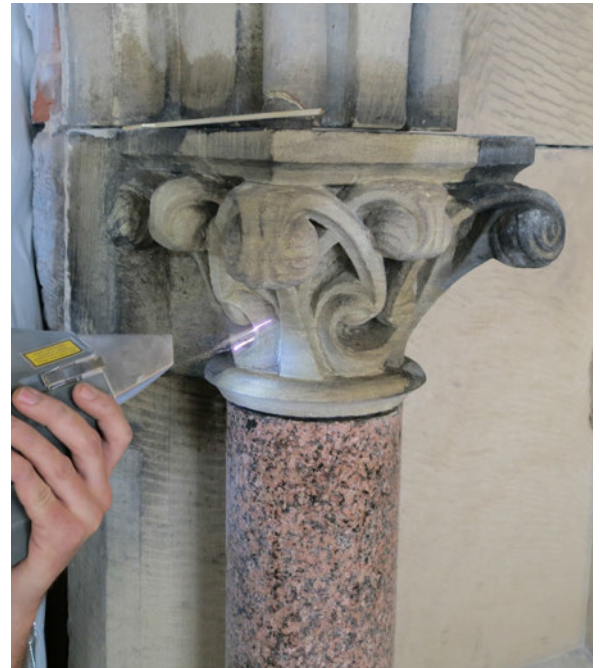
# LASER CLEANING

Laser Systems remove:

- Atmospheric Soiling
- Smoke Soiling from Fire Damage
- Paint
- Biological Growth

We operate the "Clean Laser" 500w & 1000w hand-held laser systems - this includes a compact optic, which is suitable for cleaning complex & highly decorative work.

Cleaning by laser is environmentally-friendly and guarantees zero damage to delicate, historic fabric with minimal noise, disturbance & clean-up.



ALL STONWORK CLEANED USING LASER TECHNOLOGIES.  
PHOTOGRAPHS TAKEN AT THE WEST BLOCK, PARLIAMENT  
HILL, OTTAWA.



## ADDITIONAL CLEANING METHODS

"A TEAM OF EXTREMELY EXPERIENCED AND COMPETENT PERSONNEL IN EVERY FACTION OF THEIR WORK. THEIR COMMITMENT TO SERVICING THEIR CLIENT IS UNSURPASSED IN THE INDUSTRY."

TOM VALENTE  
PCL CONSTRUCTION CANADA INC.

Abrasive Systems remove:

- Carbon Build-up
- Unwanted Cementitious Coatings
- Paint
- Bitumen & Tar
- Lime Build-up

Steam Cleaning removes:

- Biological Growth
- Paint & Graffiti
- Soiling by Birds & Animals
- Wax & Oil-Based Coatings

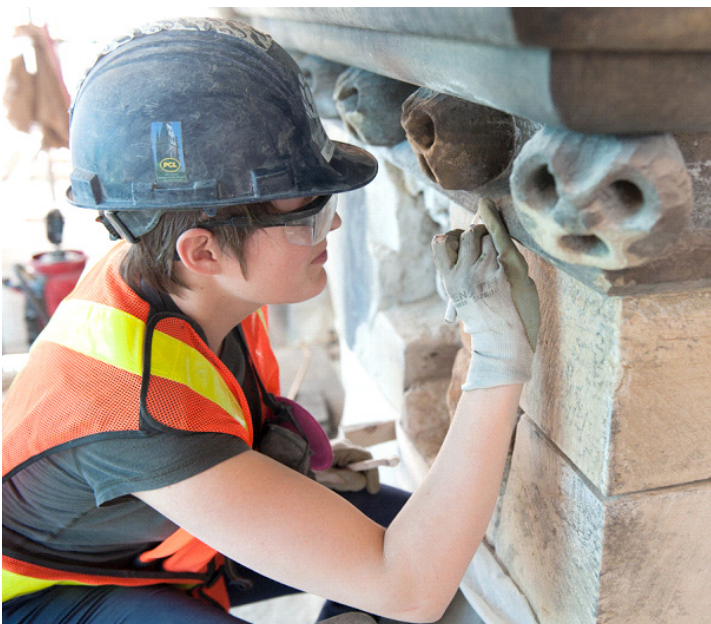
Mechanical Cleaning removes:

- Inappropriate Repairs
- Unwanted Metal Fixings & Bird Deterrent Systems
- Stubborn Grime & Dirt Build-up
- Loose & Friable Material
- Paint

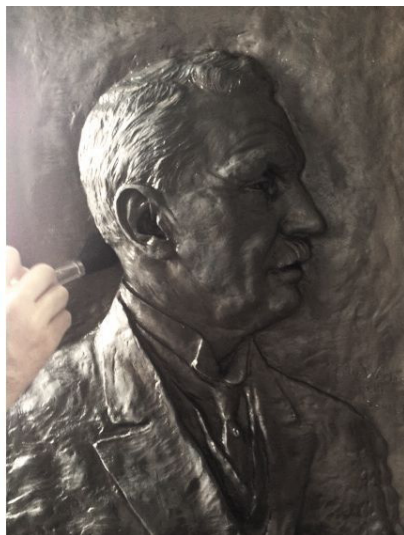
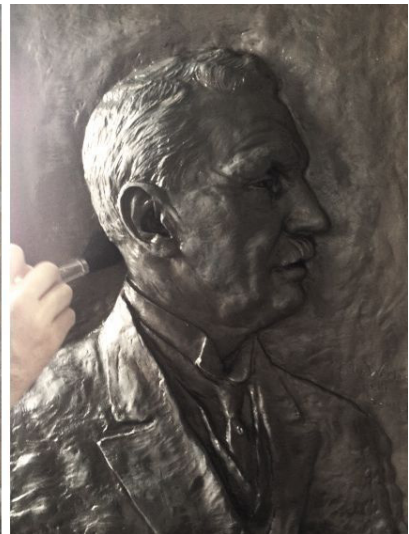
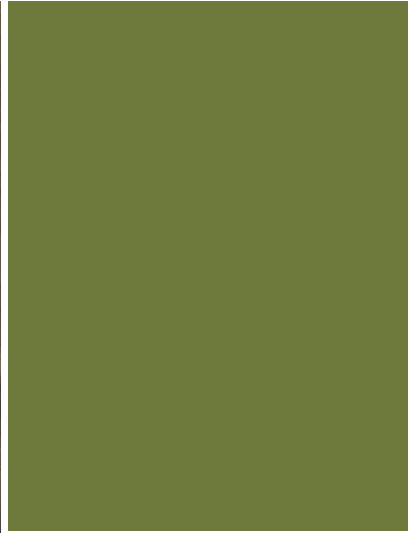
Poultices remove:

- Salts
- Metallic Stains
- Paint

A sensitive cleaning treatment usually involves more than one of the above methodologies.



CLOCKWISE FROM ABOVE: MECHANICAL CLEANING OF DECORATIVE BOSS; SPOT CLEANING OF BALL FLOWERS; STEAM CLEANING OF RUBBLE STONE; MICRO-ABRASIVE CLEANING OF VOUSOIRS.



RJW Gem Campbell  
2563A Edinburgh Place  
Ottawa, Ontario  
Canada  
K1B 5M1

Email: [info@rjwgem.com](mailto:info@rjwgem.com)  
Tel: 613 722 7790  
Fax: 613 722 7723

AHEARN MEMORIAL, OTTAWA - BEFORE AND AFTER CLEANING.